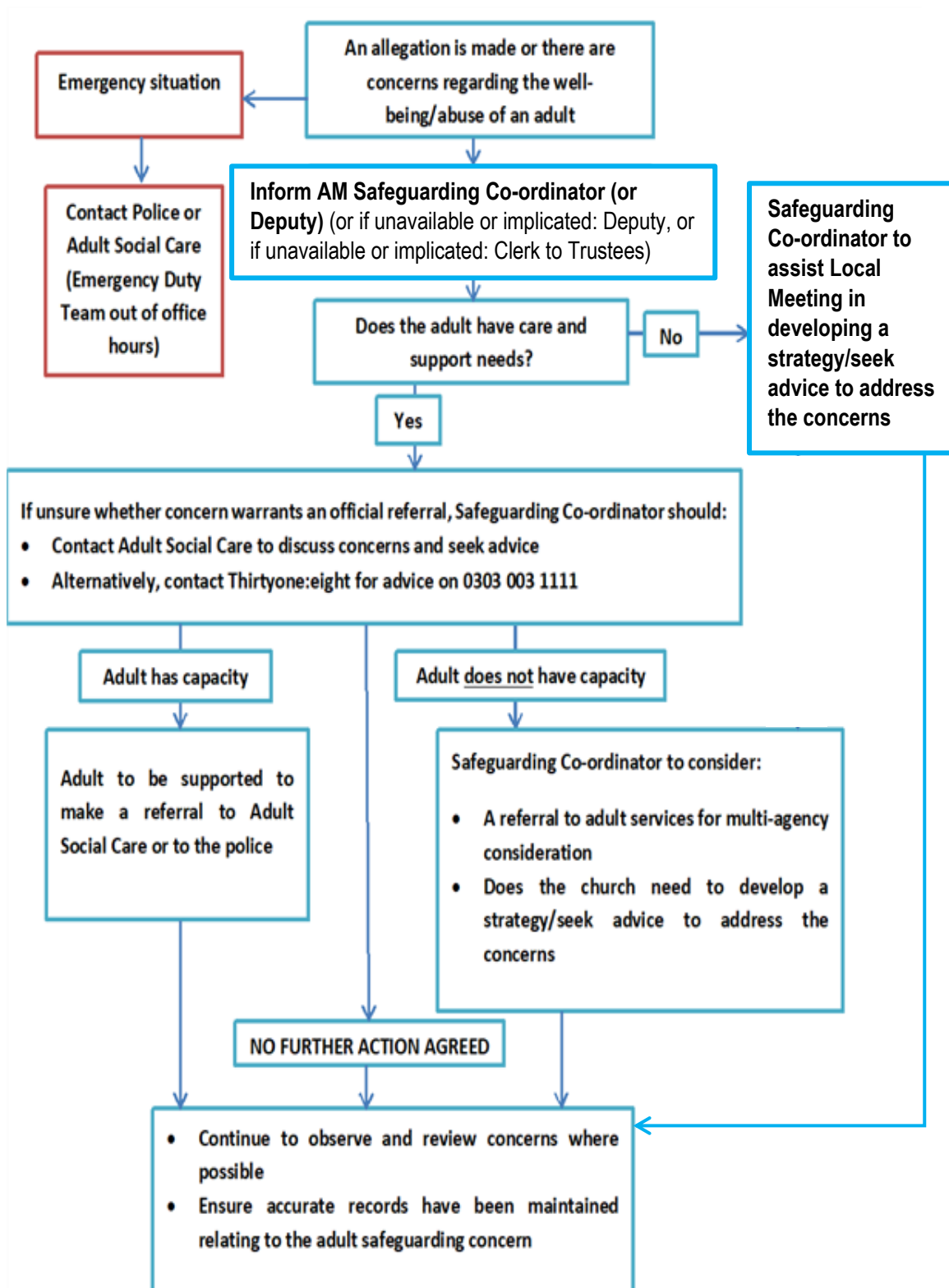


Flowchart B: in cases of concerns about an adult

An overview to be used with **Safeguarding Procedures Section 12. Responding to concerns.**



Legally, someone who lacks capacity cannot, due to an illness or disability such as a mental health problem, dementia or a learning disability, do the following:

- understand information given to them to make a particular decision
- retain that information long enough to be able to make the decision
- use or weigh up the information to make the decision
- communicate their decision.

Note that people of sound mind are allowed to make decisions which other people consider poor.

For more information about assessing mental capacity see the Care Quality Commission guidance (search for CQC Mental Capacity Act Guidance).